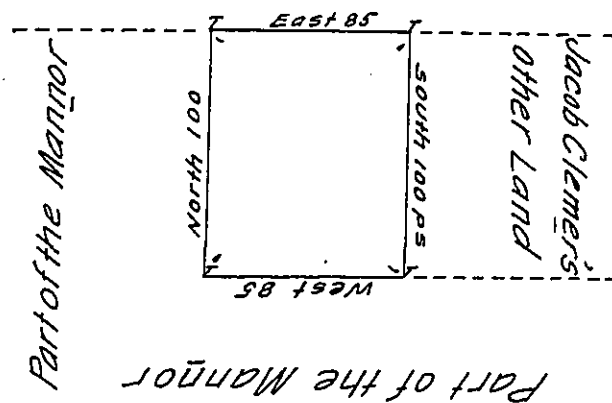


Morris Morris



Pursuant to a Verbal Order from the Hon^{ble} the Proprietor. Survey'd
to Jacob Clemor on the 4th day of December 1738 the above Descri-
bed Tract of Land being part of the Manor of Richland in the
County of Bucks Cont. 50^{ac}s with allowance of Six & Cent.

Nich^o Scull —

Accepted in pursu: of a Warr^t. dated the 29th of Jan^y 1739.

IN TESTIMONY that the above is a copy of the original remaining on file in
the Department of Internal Affairs of Pennsylvania, made
conformably to an Act of Assembly approved the 16th day of
February, 1833, I have hereunto set my Hand and caused
the Seal of said Department to be affixed at Harrisburg,
this twenty seventh day of May 1910.

Henry Howell
Secretary of Internal Affairs.